



Past and Present

Issue 6: Summer 2008

New Open Reference Hours

The Archives is now open for research without an appointment ten hours per week. Researchers are welcome to visit the Archives Monday, 10-4, and Wednesday, 9-1, on a drop-in basis. In addition, appointments still are available the remainder of the week, Monday through Friday. To schedule an appoint-

(Continued on page 2)

Medical Examiner-Coroner Records at Archives

The Archives has received a significant collection of historical records from the Medical Examiner-Coroner's Office. Included in the records are fourteen volumes of the Coroner's Official Register for the years 1891 to 1945 and fourteen volumes of the Record of Coroner Investigation covering 1932 to 1945. The collection also includes nine trays of historic lantern slides used to identify medical conditions and diseases. Currently, the collection is being organized and described by Assistant Archivist Trista Raezer, and when the description is completed, it will be posted on the Online Archive of California. "The records will be an important resource for genealogists," Ms. Raezer stated,

(Continued on page 2)

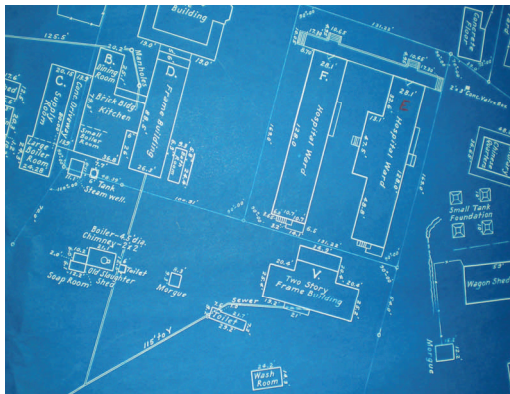


Early twentieth century Coroner's Official Registers.

Mission

The mission of the Santa Clara County Archives is to collect, preserve, and make available the historical records of Santa Clara County government. The Archives' goals are to be a center for research and information about Santa Clara County and to foster an appreciation and understanding of the county's history and development.

County Architectural Records Now Available



This drawing shows the location of some of the buildings at the County Alms House at Elmwood in 1934.

The Archives' collection of blueprints for County building projects is now processed and available for research. Transferred to the Archives by Clerk of the Board Phyllis Perez, the collection includes plans for highways, buildings, and other projects undertaken by the County. The collection, which consists of approximately 1,700 different sets of drawings, has been catalogued into a database which researchers can search. A description of the collection is available at the Online Archive of California.

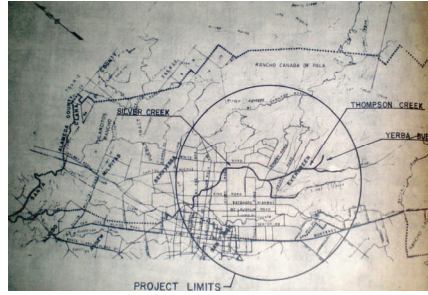
According to County Archivist Michael Grif-
(Continued on page 2)

Past and Present

Reference Hours (continued)

ment, contact the Archives at 408-792-1895 or at archives@rec.sccgov.org.

According to the County Archivist, the new hours are part of a planned expansion of service made possible by the National Historical Publications and Records Commission (NHPRC) grant received in 2007. “These new open hours,” he stated, “should be a convenience to researchers who now have times during which they are guaranteed access. We hope to expand these hours in the future.”



Map of Silver Creek flood control project 1956. See Architectural Records below.

Coroner Records (continued)

“because they contain the age, place of birth, and occupation of the deceased, among other information.” Some of the records also contain photographs, she noted, and many provide interesting historical insights. Among other things, the records include an accounting of deaths from the 1906 San Francisco earthquake, which caused significant damage to buildings in the county.



Some boxes of lantern slides from the Medical Examiner-Coroner records.

Architectural Records (continued)

fifth, the collection documents a wide variety of projects. “The projects include flood control efforts undertaken in the 1950s, many highway and expressway projects, and major County buildings,” he noted. Many of the expressway project blueprints also include aerial views of the area around the road construction. The collection includes a number of noteworthy early plans and drawings, including 1921 plans for the reconstruction of the old County Jail, a 1935 diagram showing the location of all the buildings at the County Hospital, and a 1934 map showing the location of the different structures comprising the County Alms House at Elmwood.

Contacting the Archives

Our address: 1875 Senter Road, San Jose 95112

Directions: Please see our website at <http://archives.sccgov.org>.

Our phone: 408-792-1895

E-mail: Archives@rec.sccgov.org

Hours: We are open Monday, 10-4 and Wednesday, 9-1. Appointments are normally available the remainder of the week, Monday through Friday.

Subscribing

To subscribe (or unsubscribe) to this Newsletter, please send an e-mail to: Michael.Griffith@rec.sccgov.org.

COUNTY HIGHLIGHT

County Government Center

The images below trace the development of the County Government Center from the 1950s until the 1970s. The Archives has similar pictures of many County buildings through the years.



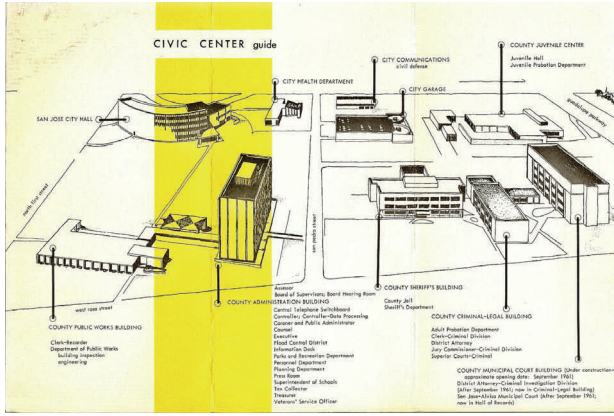
Civic Center area, 1956. The bottom of the photograph shows the San Jose City Hall under construction.

Model of proposed Civic Center development, 1956. The model is superimposed upon an aerial photograph of the area.



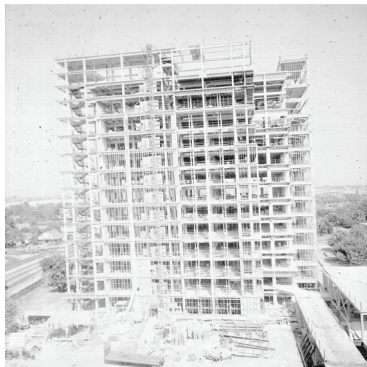
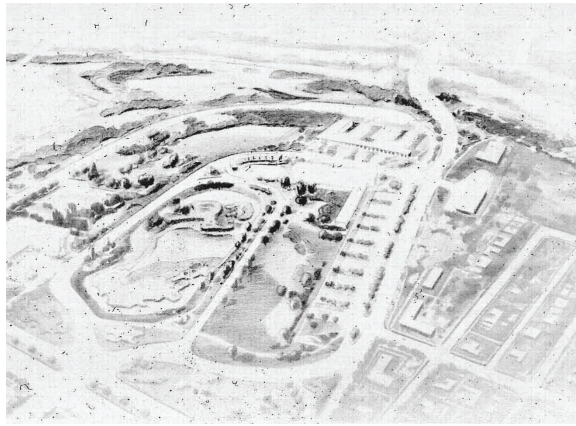
County Government Center, 1960.





Guide to buildings in the Civic Center, 1961.

Model of proposed County Government Center, 1967. This plan includes a large pond.



Construction progress, East Wing of 70 West Hedding, 1974. The East Wing replaced the building which had been 20 West Hedding.

The East Wing after completion, 1976.

